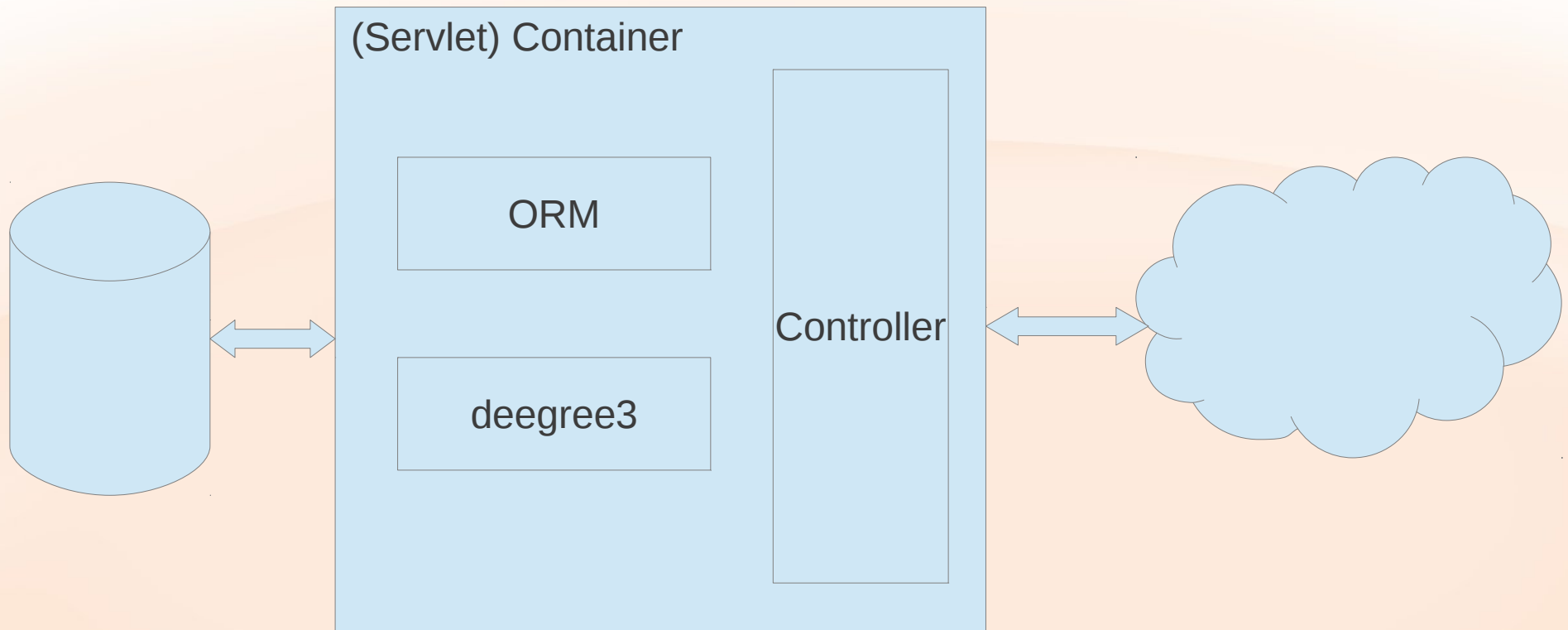


deegree3 and Java EE*

- Why?
 - deegree3 as 'internal' service
 - (Container managed) shared resources
 - ...
- Challenges
 - JAR hell
 - Abstractions
 - deegree3 workspace

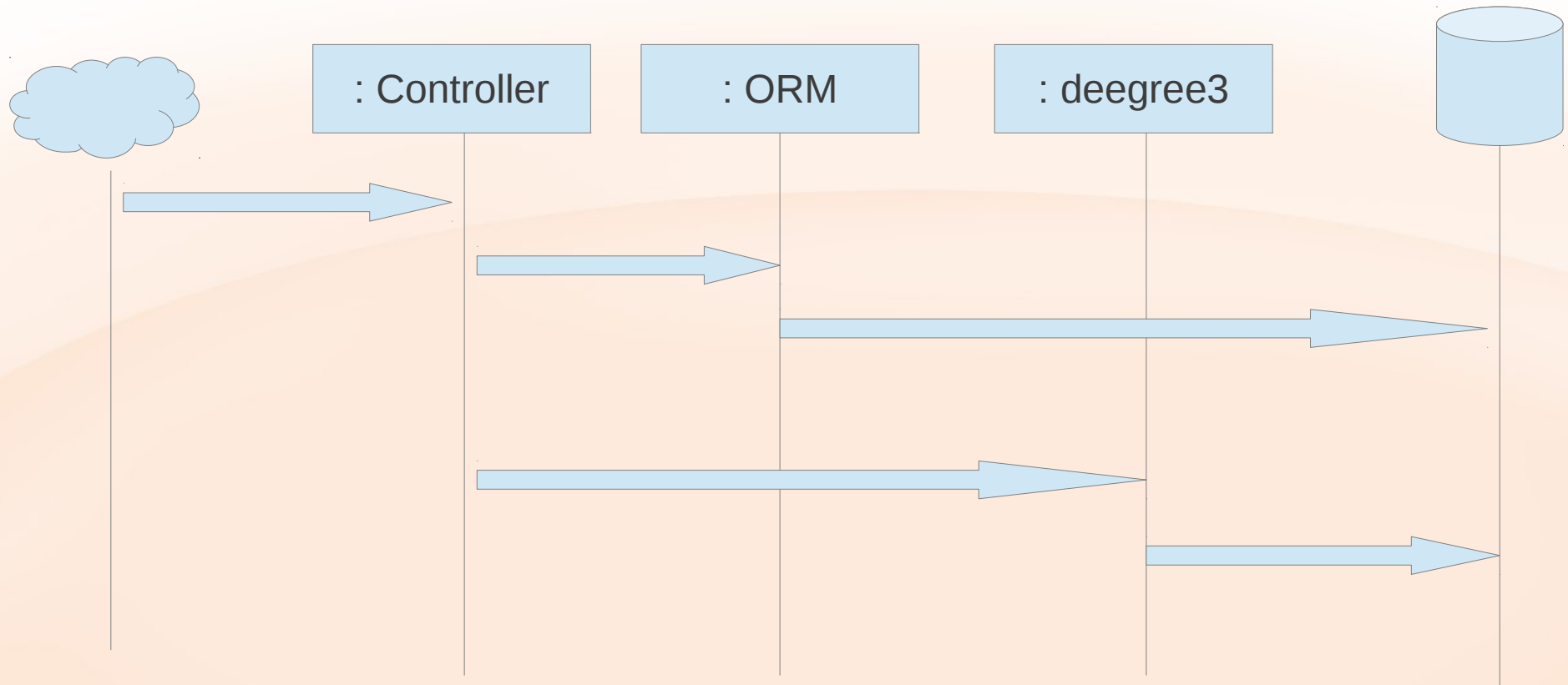
Why?

- deegree3 as 'internal' service



Why? (2)

- (Container managed) shared resources



Challenges

- JAR hell
 - Conflicting dependencies
 - xml-api
 - xerces
 - xalan
 - Forced dependencies
 - Jdbc drivers
 - OSGi ?

Challenges (2)

- Abstractions
 - No transaction manager
- deegree3 workspace
 - static context
 - tight coupling (dependency injection?)